

Features & Benefits

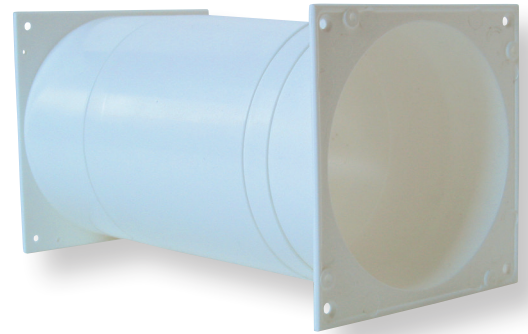
- Complete range of wall pipes & adapters
- Large flexibility

Fresh wall pipes & adapters

Fresh wall pipes are available in three dimensions, Ø81/85, Ø98/102 and Ø100/104 mm.

The standard pipe-set contain two adapters, internal & external, and wall sleeves. The telescopic sleeves fit directly on to the external adapter.

The internal adapter, alternatively the fixed vent-adapter, which both fits in the wall pipe, are longer than the short wall sleeves, this gives a telescopic-function which is longer than the short sleeve. With this solution there is no need to cut any sleeves.



Specification

Product	Description	Art no bulk
Wall pipe Ø81/85 x 75	Wall pipe with telescopic function	660875
Wall pipe Ø81/85 x 150	Wall pipe with telescopic function	800150
Wall pipe Ø95/99 x 150	Wall pipe with telescopic function	830150
Wall pipe Ø98/102 x 50	Wall pipe with telescopic function	661050
Wall pipe Ø98/102 x 100	Wall pipe with telescopic function	188009
Wall pipe Ø100/104 x 250	Wall pipe	291030
Wall pipe Ø100/104 x 360	Wall pipe	291036
Wall pipe Ø100/104 x 500	Wall pipe	290950
Wall pipe Ø118/122 x 150	Wall pipe	850150
Wall pipe Ø125 x 250	Wall pipe	291230
Wall pipe Ø125 x 500	Wall pipe	291150
Adapter 8, Ø81/85 x 90	External adapter	660892
Adapter 10, Ø98/102 x 60	External adapter	661063
Adapter 8 int Ø81 x 90	Internal adapter, fit inside a wall pipe	660890
Adapter 8 int short Ø81 x 30	Internal adapter, short model	660830
Adapter 8 int short rainstop Ø81 x 30	Internal adapter, short, including rainstop	660831
Adapter 10 int Ø98 x 60	Internal adapter, fit inside a wall pipe	661060
Adapter 10 int rainstop Ø98 x 60	Internal adapter, including rainstop	661061
Adapter 10 int short Ø98 x 30	Internal adapter, short model	661030
Adapter 10 int Flimmer	Internal adapter, fit Flimmer, TL-F, TL-P	661012

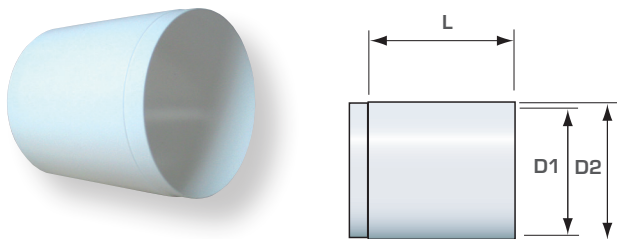
Wall pipes & adapters

Accessories

Wall pipe

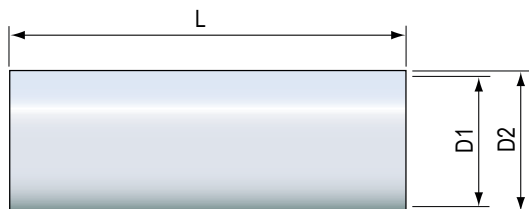
These wall pipes fit together telescopically and are available in several dimensions and lengths.

Material: Polycarbonate



These wall pipes are available in several dimensions and lengths (TL-D-serie).

Material: PVC



Measurement wall pipe (mm)

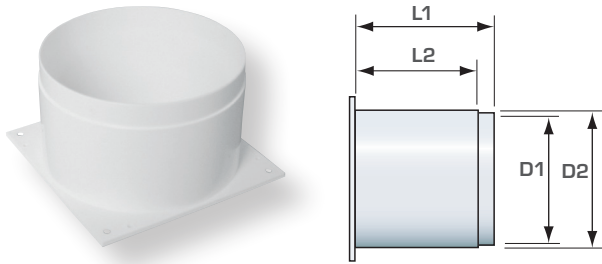
Product	D1	D2	L
Wall pipe Ø81/85 x 75	81	85	75
Wall pipe Ø81/85 x 150	81	85	150
Wall pipe Ø95/99 x 150	95	99	150
Wall pipe Ø98/102 x 50	98	102	50
Wall pipe Ø98/102 x 100	98	102	100
Wall pipe Ø118/122 x 150	118	122	150

Measurement wall pipe (mm)

Product	D1	D2	L
Wall pipe Ø100/104 x 250	100	104	250
Wall pipe Ø100/104 x 360	100	104	360
Wall pipe Ø100/104 x 500	100	104	500
Wall pipe Ø125 x 250	125	129	250
Wall pipe Ø125 x 500	125	129	500

Adapter, external

Adapter which fit with snap-in closure to grille #150 and #110x150, and also the vents TL-E and TL-P. The adapter fit directly on to the wall pipes, for each dimension.



Measurement adapter, external (mm)

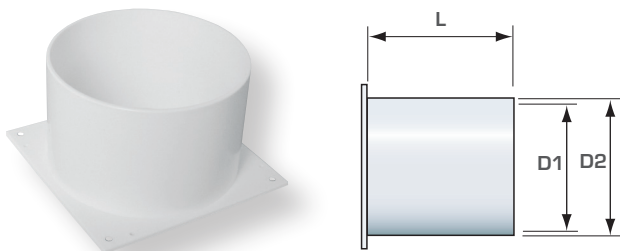
Product	D1	D2	L1	L2
Adapter 8, Ø81/85 x 90	81	85	90	78
Adapter 10, Ø98/102 x 60	98	102	60	48

Adapter, internal

Adapter which fit with snap-in closure to grille #150 and #110x150, and the vents TL-E and TL-P. The adapter fit directly on to the wall pipe and external adapter, for each dimension.

The models with rainstop have a small partition wall, this wall efficiently prevents water penetration.

The shorter adapters are mainly designed for the sound reducing wall pipes (they expose as much of the dB-pipe as possible).



Measurement adapter, internal (mm)

Product	D1	D2	L
Adapter 8 int Ø81 x 90	77	81	90
Adapter 8 int short Ø81 x 30	77	81	30
Adapter 8 int short rainstop Ø81 x 30	77	81	30
Adapter 10 int Ø98 x 60	94	98	60
Adapter 10 int rainstop Ø98 x 60	94	98	60
Adapter 10 int short Ø98 x 30	94	98	30
Adapter 10 int Flimmer	94	98	102